

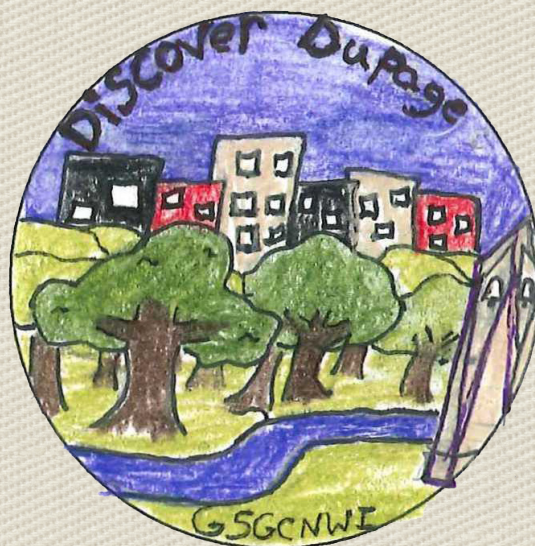
# Discover DuPage County

DuPage County is a community located in our council. Try this badge to discover the area's rich history, culture, natural resources, sports, entertainment and educational opportunities!

**Steps:**

1. Healthy Living
2. Arts
3. Outdoor Education
4. History and Culture
5. STEM

**Purpose:** When I've earned this badge, I'll know more about DuPage County and what it has to offer.



Design by Elena Fazio

**"The heart of the nation, the start of the West  
In Illinois, Illinois"** *From "Illinois"  
by Randy Newman*



# STEP 1

# Healthy Living



Healthy Living is a good combination of physical activity and eating nutritious foods. There are many ways to discover how to be healthy in DuPage County.

## Choices - Do One:

- ☐ **Find out about beekeeping in DuPage County.** Visit Kline Creek Farm in West Chicago, IL to experience the tradition of beekeeping and see an apiary. You can even arrange a Busy as a Bee program for your group to meet the beekeepers, take a close-up look at a hive and taste the honey.

OR

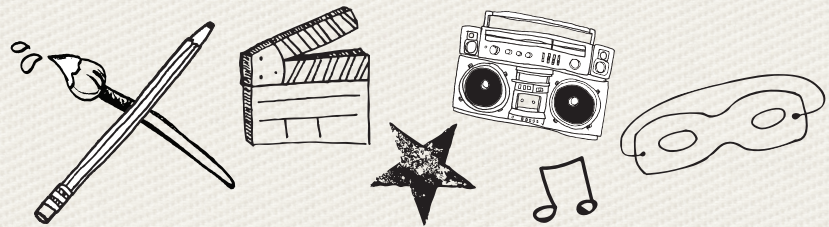
- ☐ **Get active at the Bulls/Sox Academy in Lisle.** Organize a field trip for your troop to get moving with the fitness experience! Take your group through a series of four different fitness stations including circuit training, an obstacle course, a team-building station, and "THE VAULT", an "exergaming" arcade, where kids exercise while playing video games.

OR

- ☐ **Glide across the ice at Seven Bridges Ice Arena in Woodridge.** Call ahead and go to Seven Bridges practice your cool moves. Before you put on your skates, make sure to request the fact sheet designed for Girl Scouts to learn more about different ice sports!

# STEP 2

# Arts



There are many ways to take advantage of the rich art scene in DuPage County. Whether you enjoy performing arts, visual arts or making art projects, there are many opportunities to be creative in this community.

## Choices - Do One:

- ☐ **Enjoy a self-guided public art tour along the Naperville Century Walk.** Experience "art with a story" as you learn about the area's past 100 years through art. You can find most of the murals, mosaics and sculptures concentrated within two miles in downtown Naperville. Create a work of art about this place to share with your friends – write a poem, make a painting/drawing or create a photo collage.

OR

- ☐ **Peruse local art, and make some of your own, at Gallery's Choice in Downers Grove.** Discover DuPage through hands-on art projects at this local staple. Take time to admire the work of over 75 local artists and call ahead to schedule an art program designed to explore local landmarks and landscapes, historic sites and indigenous people of DuPage. (Bonus: they even do badge programs!)

OR

- ☐ **Learn about rocks and make unique stone jewelry at the Lizzadro Museum of Lapidary Art in Elmhurst.** Check out the precious stone rock gallery and take a rock/mineral identification class to learn how to identify items in your rock collection and jewelry box. Make sure to call in advance for tours or educational classes, including jewelry making. (BONUS: Ask if they'll help you work on your Jeweler badge!)





## STEP 3 Outdoor Education



Boasting over 60 forest preserves, plus rivers, nearly 150 miles of trails and multiple nature centers, DuPage has an incredible amount of outdoor offerings.

### Choices - Do One:

- ☐ **Go on a hike or walk.** DuPage County has multiple different terrains, but is most well-known for its prairies, woodlands and wetlands. Choose one of these terrains to research, and then explore a forest preserve or natural area to observe animals, plants and land.
- OR 
- ☐ **Get into Geocaching at the DuPage Forest Preserve!** Search for treasure chests, known as "geocaches," using GPS to find each chest's hiding place. Each of the caches located in the parks reveal information about the district's history. E-mail [geocache@dupageforest.org](mailto:geocache@dupageforest.org) to get more information. (BONUS: earn your Geocaching badge while exploring DuPage County! Look at the badge requirements for websites or check out the Geocachers of Northeastern Illinois' site: [gonil.org](http://gonil.org).)
- OR 
- ☐ **Explore Camp Greene Wood, GSGCNWI's camp property in DuPage County.** Attend a council-sponsored program, hike the trails, look for birds and other animals or try letterboxing. If you're going to explore on your own, email [property@girlscoutsgcnwi.org](mailto:property@girlscoutsgcnwi.org) first.

## STEP 4 History & Culture



Every state has a culture all its own, including historical sites, festivals and traditions. Discover DuPage County's rich history and culture.

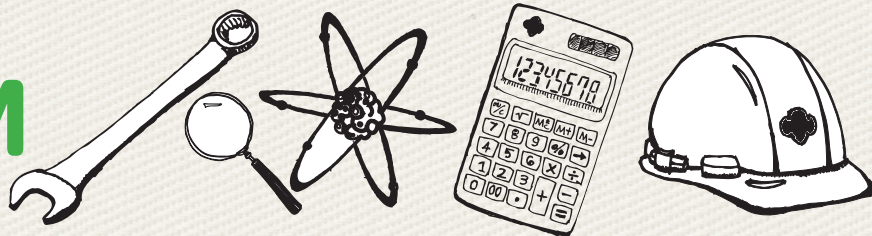
### Choices - Do One:

- ☐ **Research international sister cities.** Many cities in DuPage have "sister cities" in other countries. What are sister cities? To find out, head to a local library to check out a book (like the Naperville Public Library, ranked #1 for a city of its size for over 10 years straight). Research a city that is sisters with one in DuPage. Then, look up a recipe for a dish traditionally made in one of those counties and, with an adult, try your hand at making it! For example, Bolingbrook's sister city, San Pablo in the Philippines, is famous for its buko (coconut) pie.
- OR 
- ☐ **Scout out an adventure at Cantigny Park in Wheaton.** Cantigny offers a whole afternoon's worth of fun, with huge gardens, a military history museum, an outdoor tank park (the only one in the area!) and a historic home once owned by Robert R. McCormick. While you're there, join a bird watching tour!
- OR 
- ☐ **Explore a local festival.** There's a lot to see and do at DuPage's local festivals, including: Civil War Days, Lilac Parade, Chocolate Fest, Naperville Jazz Fest, Summer Nights Shakespeare and Lisle Depot Days. Be a sleuth – why was the festival started? Once you know the answer, go enjoy the festival! For a list of festivals, check out [discoverdupage.com](http://discoverdupage.com) and click on the "Calendar of Events" page.



STEP

# 5 STEM



STEM stands for science, technology, engineering and mathematics. Learn more about DuPage by discovering STEM in the area.

## Choices - Do One:

☐

**Learn about DuPage County's ecology and environment.** Research the weather, plants, natural resources, wildlife and climate; compare this information to another county in the U.S.

OR

☐

**Get hands-on at the SciTech Museum in Aurora.** Check out this interactive museum: you can ride a bike that powers light bulbs or go to their new outdoor park, filled with fun games and activities. Explore different types of science and technology to see what you're interested in learning more about. Plan ahead and arrange a Discovery Demo or Discovery Lab experience to dive a little deeper into your favorite STEM topic.

OR

☐

**Find out more about science and engineering in DuPage County.** Did you know that science is taking place all around us? There are many scientists that are researching new and interesting ideas at Fermilab in Batavia, IL. Take a tour to find out about all of the great work the scientists are doing there, then attend one of their programs for families and students to get more hands-on experience with science.

## What did I learn?



# Special Thanks to Our Sponsors

**THE FITNESS  
EXPERIENCE**  
at the Bulls/Sox Academy



Contact Marisa Boltin (630) 324-8251  
or email [MBoltin@BullsSoxAcademy.com](mailto:MBoltin@BullsSoxAcademy.com)

6200 River Bend Dr. Lisle, IL 60532

Where science,  
technology,  
learning and  
fun collide.

Now with over 150  
Hands on Exhibits



Scout Field trips  
Badge Classes  
Science Outreach  
Museum Overnights

630-859-3434 [scitechmuseum.org](http://scitechmuseum.org)

**Scout Out an Adventure  
at Cantigny Park**


Visit Our Website for Badge Programs  
and Overnight Opportunities  
[www.firstdivisionmuseum.org/girlscouts](http://www.firstdivisionmuseum.org/girlscouts)



1s151 Winfield Road  
Wheaton, IL 60189  
[www.cantigny.org](http://www.cantigny.org)  
630-668-5161

SEVEN BRIDGES ICE ARENA HAS THE BASIC  
PHILOSOPHY THAT ANYONE CAN LEARN TO ICE  
SKATE AND ACHIEVE THEIR GOALS BY LEARNING  
HOW TO BE THE BEST YOU CAN BE.

FOR MORE INFORMATION CONTACT:  
FRANCINE LARSON  
FIGURE SKATING DIRECTOR  
(630) 271-4400 x 223



6690 S. RT. 58  
WOODRIDGE, IL 60517  
(630) 271-4400  
[WWW.SEVENBRIDGESICEARENA.COM](http://WWW.SEVENBRIDGESICEARENA.COM)

**Lizzadro Museum of Lapidary Art**  
*Sharing with others the eternal beauty  
of gemstones and promoting the  
study of earth science*



220 Cottage Hill  
Elmhurst, IL 60126  
(630) 833-1616

[www.lizzadromuseum.org](http://www.lizzadromuseum.org)

Tours, jewelry-making and geology  
programs available upon request

Please contact Museum Educator for more  
information: [educator@lizzadromuseum.org](mailto:educator@lizzadromuseum.org)

Earn Your Discover DuPage Badge at

**Gallery's Choice**

Discover Dupage Watercolors, Acrylics,  
Mosaics, Stained Glass or Potawatomi Weave Jewelry

926 Warren Ave. 630-969-5660  
Downers Grove [www.GallerysChoice.com](http://www.GallerysChoice.com)