

Discover Northwest Indiana

Northwest Indiana is a community located in our council. Try this badge to discover the area's rich history, culture, natural resources, sports, entertainment and educational opportunities!

Steps:

1. Healthy Living
2. Arts
3. Outdoor Education
4. History and Culture
5. STEM

Purpose: When I've earned this badge, I'll know more about Northwest Indiana and what it has to offer.



*"I'm coming home, it's plain to see.
I still got Indiana soul in me."*

*From "Goin' Back
to Indiana" by The
Jackson 5*

for
order
girl
s

STEP

1

Healthy Living



Healthy living is a good combination of physical activity and eating nutritious foods. There are many ways to be healthy in Northwest Indiana.

Let's explore!

Choices - Do One:

- ☐ **Learn about healthy food movements in Northwest Indiana.** Find out about how chefs, gardeners, local farmers and families are making a commitment to healthy eating by investigating the slow food movement, community gardening and urban agriculture efforts in the region. grownwi.com and slowfoodsouthshore.org are a couple places to start (ask an adult for help).

OR

- ☐ **Attend a local team's sporting event.** There are multiple colleges and universities in Northwest Indiana – find a women's team and go to a game!

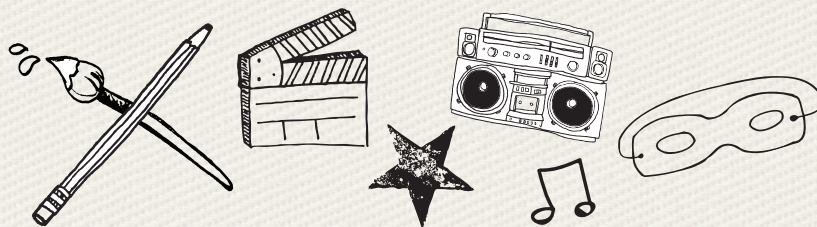
OR

- ☐ **Participate in a physical activity at Jak's Warehouse in Schererville.** Bust out the lasers with your friends and play tag or find your way through the laser maze.

STEP

2

Arts



The arts are alive in Indiana! Whether you enjoy performing arts, visual arts or making an art project, there are many opportunities to be creative in this community.

Choices - Do One:

- ☐ **Attend a performance.** Northwest Indiana boasts multiple arts venues – find one nearby and go see a play or ballet! The Indiana Ballet Theatre has great shows throughout the year.

OR

- ☐ **Peruse the Brauer Museum at Valparaiso University.** Call ahead and request a tour of the museum. Find two pieces of artwork in the museum that were created by Northwest Indiana artists. Compare and contrast their work.

OR

- ☐ **Make art!** Research facts about Northwest Indiana, then create a work of art that represents what the region means to you. Maybe it's the history of the area or a particular city. Another great idea is to memorialize the experiences you've had in Northwest Indiana so far by reviewing other requirements for the Discover Northwest Indiana badge program.

STEP 3

Outdoor Education



Northwest Indiana is famous for the Lake Michigan shoreline and the Indiana Dunes. Forests, farmlands, marshes, prairies and rolling plains define the geography of the area.

Choices - Do One:

☐

Go on a hike or walk. Explore a forest preserve or natural area to observe animals, plants and the terrain. Take pictures of trees and plants while you're walking. When you get home, identify the names of the things you saw using a tree identification guide or surfing the web (ask your parents first!). Are these unique to Northwest Indiana?

OR

☐

Visit the Indiana Dunes. You'll find the dunes along the shore of Lake Michigan. How did they get there? How were they formed? Find out the answers to these questions, and then explore all that the Dunes has to offer!

OR

☐

Learn more about nature. Attend an outdoor educational program at Dunes Learning Center, located in the spectacularly biodiverse Indiana Dunes National Lakeshore. Spend time exploring the great outdoors at a special event or summer camp. Their 63-acre classroom features beaches, prairies, dunes and woodlands of the region.

STEP 4

History & Culture



Every state has a culture all its own, including historical sites, festivals and traditions. Discover Northwest Indiana's rich history and culture.

Choices - Do One:

☐

Travel back in time. Visit a local history museum; you can find them in many different communities, including the Porter County Museum of History, Westchester Township History Museum and Lake County Historical Museum. While at one of these museums, write down 10 facts that you didn't know beforehand about the specific community. Try to stump your friends using this newfound trivia.

OR

☐

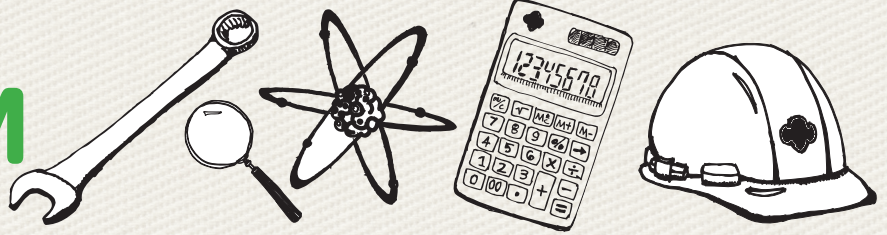
Take a trip to a historical home or building. History is bountiful throughout Northwest Indiana; learn about the past by visiting a piece of history.

OR

☐

Eat your way through a local festival. Here a few to whet your appetite: Popcorn Festival in Valparaiso, Kouts Pork Fest in Kouts, Pierogi Fest located in Whiting or an Indiana county fair. Be a sleuth – why was the festival started? Once you know the answer, go eat some yummy food!

STEP 5 STEM



STEM stands for science, technology, engineering and mathematics. Learn more about the Hoosier state by discovering STEM in the area.

Choices - Do One:

☐

Get hands-on at the Challenger Learning Center in Hammond. Check out the South Shore Skies presentation in the planetarium, which focuses on stars, constellations and other objects visible from Northwest Indiana. While there, don't forget to ask about Colonel Jerry Ross, a retired astronaut from Northwest Indiana!
(**BONUS:** Earn your Night Owl badge at the center.)

OR

☐

Learn about Northwest Indiana's ecology and environment. Research the weather, plants, natural resources, wildlife and climate; compare this information to another region of the U.S.

OR

☐

Find out more about technology and engineering in Northwest Indiana. Investigate the technology used in manufacturing plants. What products are being manufactured? Are there any new innovations used here?

What did I learn?

Special Thanks to Our Sponsors

BRAUER MUSEUM OF ART

Valparaiso University

www.valpo.edu/artmuseum

219-464-5365

The Brauer Museum of Art has a permanent collection of over 3500 pieces of American art and international religious art. The Brauer Museum features a full schedule of exhibitions and events. Please see our web page. To schedule a tour please call 219-464-5276.

THE BEST PLACE FOR STEM IN CHICAGOLAND



**Brownie, Junior and Cadette
badge-earning science workshops**

Simulated space missions
Science Labs • LASER shows • Summer camps
Family Science Nights • Planetarium shows



Located on the Purdue Cal campus in Hammond
(219) 989-3250 • scouts@clcnwi.com • www.clcnwi.com

Space Science & Technology

Historic Preservation And Performances



**Future Site of The Classical Arts Centre
Museum and Family Destination**

www.ibtnw.org to be involved in both
OR call 219.755.4444

Shows for Girl Scout Programs

IBT
Indiana
ballet
theatre
501(c)(3) non-profit organization

Bastille Days

Classical Arts Centre-Crown Point
July 12th 2014 • 12-7pm

Nutcracker 2014

Star Plaza Theatre-Merrillville
December 3rd & 4th 2014 • 7pm

Firebird 2015

Star Plaza Theatre-Merrillville
April 23rd 2015 • 7pm

Kaleidoscope 2015

Memorial Opera House- Valpo
May 22nd & May 23rd 2015 • 7pm
Special Scout & Group Performance
May 23rd • 3pm



219.322.JAKS [5257]

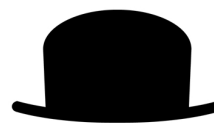
BIRTHDAY PARTIES, FUNDRAISERS, AND FAMILY FUN!

EARN YOUR DISCOVER NORTHWEST
INDIANA BADGE HERE

jakswarehouse.com

facebook [/jakswarehousefun](https://www.facebook.com/jakswarehousefun)

221 Indianapolis Blvd. Schererville, IN 46375



**SOUTH SHORE
ARTS**

219/836.1839
www.southshoreartsonline.org

NORTHWEST INDIANA
SYMPHONY
ORCHESTRA

219/836.0525
www.nisorchestra.org