



Sample Week at Day Camp

Monday

8:40-9:00 a.m.
Check-In

9:00-9:15 a.m.
Flag & Morning
Announcements

9:15 a.m.-12:00 p.m.
Name Tags,
Ice Breakers,
Cookout Planning +
Activity Time

12:00-12:30 p.m.
Lunch*

12:30-3:00 p.m.
Activity Time

3:00-3:30 p.m.
Check-Out



Tuesday

8:40-9:00 a.m.
Check-In

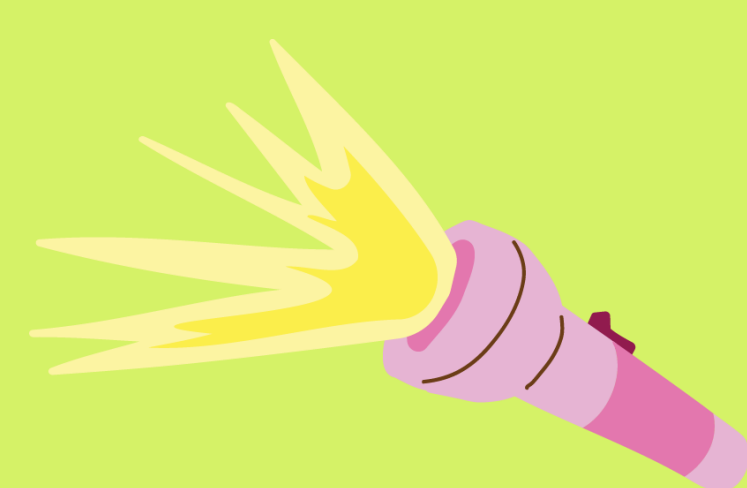
9:00-9:15 a.m.
Flag & Morning
Announcements

9:15 a.m.-12:00 p.m.
Activity Time,
Tie-Dye Tuesday!

12:00-12:30 p.m.
Lunch*

12:30-3:00 p.m.
Activity Time,
Tie-Dye Tuesday!

3:00-3:30 p.m.
Check-Out



Wednesday

8:40-9:00 a.m.
Check-In

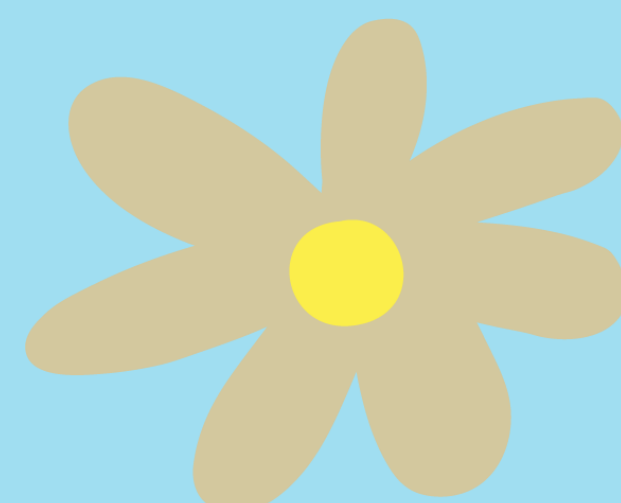
9:00-9:15 a.m.
Flag & Morning
Announcements

9:15 a.m.-12:00 p.m.
Activity Time
(Daisy & Brownie
Cookout,
10 a.m.-2 p.m.)

12:00-12:30 p.m.
Lunch*

12:30-3:00 p.m.
Activity Time

3:00-3:30 p.m.
Check-Out



Thursday

8:40-9:00 a.m.
Check-In

9:00-9:15 a.m.
Flag & Morning
Announcements

9:15 a.m.-12:00 p.m.
Activity Time

12:00-12:30 p.m.
Lunch*

12:30-3:00 p.m.
Activity Time

3:00-3:30 p.m.
Daisy & Brownie
Check-Out

(Extended Day for
Juniors & Cadettes
Begins)

3:30-5:00 p.m.
Activity Time

5:00-7:00 p.m.
Cookout Dinner

7:00-8:00 p.m.
Campfire and Songs

8:00-8:30 p.m.
Check-Out



Friday

8:40-9:00 a.m.
Check-In

9:00-9:15 a.m.
Flag & Morning
Announcements

9:15 a.m.-12:00 p.m.
Activity Time

12:00-12:30 p.m.
Lunch*

12:30-2:15 p.m.
Friday Fair

2:15-3:00 p.m.
Closing Ceremony

3:00-3:30 p.m.
Check-Out



Camp Greene Wood Activity Time Examples

- Archery (4th grade and up)
- Arts + Crafts
- Creek Stomping
- Games, i.e., Gaga Ball, Badminton, Tether Ball, Volleyball
- Hammocking
- Hiking Trails
- Nature Exploration
- Science + Engineering Challenges
- Songs



*Lunch times may vary

Camp participants can take part in themes throughout the week!

Wednesday is Wacky Wednesday, the camp community is invited to dress in their wackiest, mismatched clothes for the day.

Thursday is Theme Thursday, participants are welcome to dress up as the designated theme for the day.

On Friday, everyone wears their matching summer camp t-shirt.

